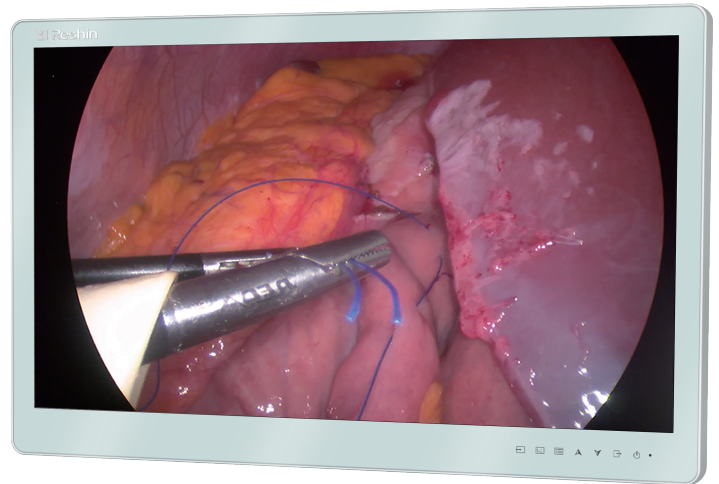


MS270P 27"

27" surgical medical display is equipped with 1920*1080 IPS HD screen and high transmittance AR anti-glare protective front glass. With complete signal interfaces, it can be applied to a variety of image display. To meet the high-level purification requirement in operating room, it is designed with full-mirror appearance, which can effectively prevent dust and liquid pollution during operation. Its standard installation structure is fully compatible with operating room construction.

SURGICAL OPERATION MEDICAL DISPLAY



IPS	
Display Size	27"
Color	1.07B
Resolution	1920x1080
Display Ratio	16 : 9
Brightness	1000 cd/㎡
Contrast Ratio	1000 : 1 (TYP)
Viewing Angle	178° /178°
Response Time	14ms (TYP)
Input Ports	VGA/ DVI/ S-VIDEO/ VIDEO/ BNC(SDI)
Output Ports	DVI/ BNC(SDI)
Power Supply	DC 24V
Power Consumption	≤80W max
MTBF	> 30,000h
Structural Appearance	White Metal Shell With Protective Front Glass
Dimension	647*409*63 mm (W*H*D) (Without Stand)
Weight	8.5±0.5 kg (Without Stand)
Installation Standard	VESA 100x100 mm
Application	Digital Video-endoscope System / ENT
Certifications	CE

True color reproduction

LED Backlight

Exquisite and real image

Full View Displaying Panel

Comply with International Medical Standard

Shenzhen JLD Display Expert Co., Ltd all rights reserved.
 Without the written permission of the copyright owner, it is not allowed to copy, distribute, delete, modify, extract, reprint or spread through networks information. Product configuration, specifications, colors and pictures are for reference only. Subject to change without notice.
 Shenzhen JLD Display Expert Co., Ltd. reserves the rights to change product design and specifications.